

Fox Village Dressage Cloud Server Edition

Workstation Setup Instructions

Thank you for your recent purchase of Fox Village Dressage Cloud Server Edition! Your upgraded license comes standard with five user logins for you to make use of at your events. Additional user accounts can be provisioned upon request for an additional yearly access fee.

Note: Please be sure to request additional user accounts *before* your show's start date. Send requests to helpdesk@foxvillage.com and be sure to reference the name and contact info that appears on your FVD license (see startup screen) or click Help >> About >> About Fox Village Dressage to view license information.

Fox Village Dressage Cloud Server Edition allows you to concurrently operate and manage shows within your organization without the headaches of establishing a local area network at often-geographically challenging horse show venues. Simply provide your computer with a stable internet connection, and you'll be able to easily and efficiently maneuver through the application without any of the delays often experienced while operating on a local area network.

Step 1 – OpenVPN Client Installation & Configuration

The first step is to install an OpenVPN client on your machine. The current client, passwords, and instructions can be downloaded at the link below. Choose your version in the folder. The username/password to the OpenVPN client is stored in the file named "auth.txt".

<https://www.dropbox.com/sh/zu6e1kkh2flhr8b/AABzLNPy5wNIUi11UtHmL5mqa?dl=0>

Note: You do not need to activate/connect to the VPN until you are ready to launch your Remote Desktop Session (see next step).

Step 2 – Remote Desktop Client Installation

The next step is to install your Remote Desktop Client (RDC). This is the software application that is used to bring an on-demand Windows session to your chosen device. While there are Remote Desktop Clients available for nearly all internet connected devices, we highly recommend using RDC clients designed and maintained by Microsoft. We are unable to guarantee compatibility or functionality of RDC software written by third-party developers.

Microsoft Windows Users

Microsoft Remote Desktop for Windows 10 Pro is already natively installed. *

*If you *don't* have Windows Pro, then you may have to download the Remote Desktop Client from the Windows App store : <https://www.microsoft.com/en-us/p/microsoft-remote-desktop/9wzdncrfj3ps?activetab=pivot:overviewtab>

Mac OS Users

Microsoft Remote Desktop for Mac
(<https://apps.apple.com/us/app/microsoft-remote-desktop/id1295203466?mt=12>)

Step 3 – Remote Desktop Client Configuration

https://www.foxvillage.com/Content/Images/FVD-in-the-Cloud_ExtractFromManual.pdf

The Remote Desktop Server address is “192.168.0.56:3489”

The user name(s) are fvd#user#@foxvillage.com. (For example fvd5user1, fvd5user2, etc.) all using the password “*****”.

Your files are all stored on the Data E: FVD## drive. (FVD## = your FVD group # assignment) i.e. FVD5

In the RDP settings, turn on clipboard sharing so you can *upload/copy/paste local files to the E: drive* on the server. If you are using both a local and server copy you will want to *upload your data files and your own “license.dll” file* so you can still authenticate uploads to show results, etc.

Each user gets their own unique Desktop, but all users share the contents of the E: drive. So for example, each user has a shortcut to their own front end copy of FVD.accde, but they all link to the data residing on E: drive.

Fvd#user1 = fvd.accde; Fvd#user2 = fvd2.accde; Fvd#user3=fvd3.accde and so forth.

If you close your session or get disconnected without logging out, it stays active on the server. But, for good housekeeping if you’re “done”, you should try to ***logout of the session by going to START, User, sign out.***

Data Backup and Planning

Please keep all of your organization’s Fox Village data files on your E: drive and refrain from storing any files on your individual user desktop account. We make frequent backups of the E: and are able to recover files stored there in the event of a failure or catastrophic event.

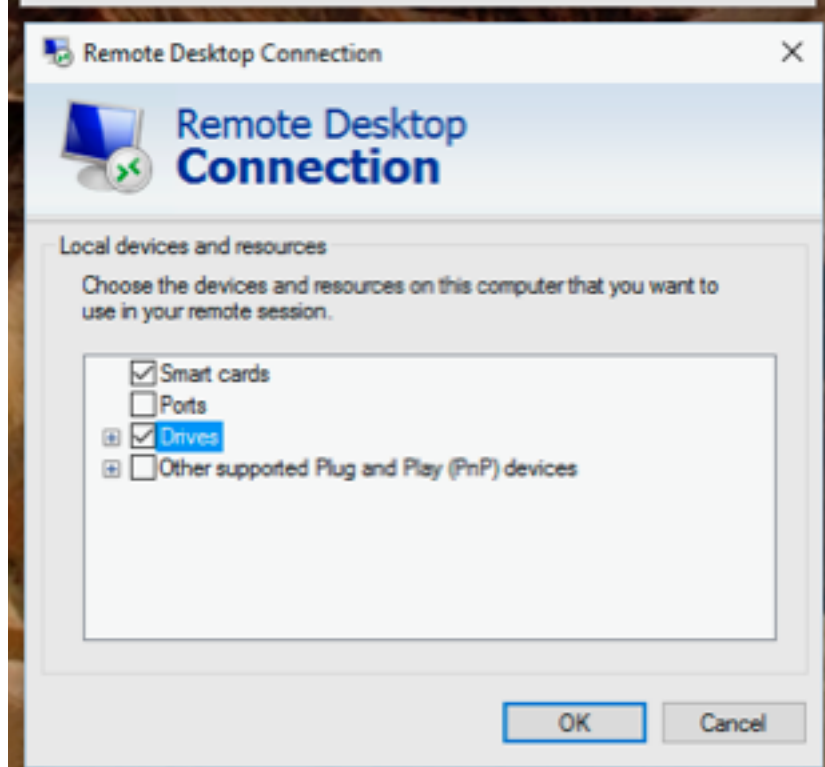
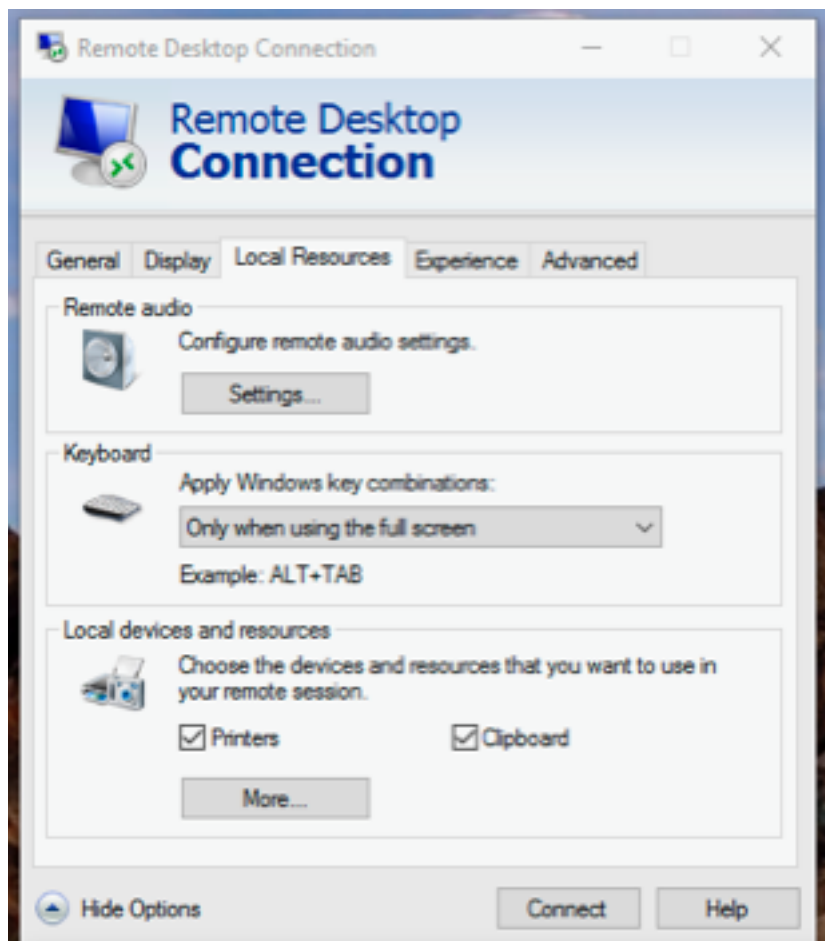
While the Fox Village Cloud Server Edition does allow you to store additional files on this drive, please refrain from storing files other than the core application files and your show data files. All FVDCS users are subject to account reviews. Users storing non-essential files will be asked to remove these files from the FVDCS environment.

Lastly, we recommend you still make regular offsite backups of your core data files. This means copying and pasting your data files from the FVDCS session back to a local machine. Please take the time to familiarize yourself with a file backup process that works for you. If you have questions regarding best practices, please drop us a line at helpdesk@foxvillage.com.

Periodic Maintenance & Update Plan

Our goal in operating the Fox Village Dressage Cloud Server is to reduce the headaches of maintaining your own functional installation environment. In order to provide you with the ideal operating space to run Fox Village, we routinely apply updates and security patches to the Cloud

Server. All FVDCS customers will be notified by email when *planned* maintenance is scheduled. During these maintenance periods, access to the FVDCS platform may be disabled. For this reason, we recommend all users continue to maintain a local installation of Fox Village so they can download their show data files and work offline during FVDCS planned maintenance periods.



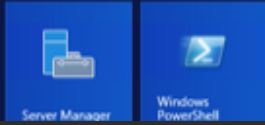
Start

fvd5user1



Lock

Sign out



FVDS

File Home Share View

This PC > Data (E:) > FVDS

Search FV...

| Name | Date modified | Type | Size |
|----------------------|----------------------|-----------------------|-----------|
| Support | 4/17/2015 8:11 AM | File folder | |
| Temp | 11/11/2015 10:08 ... | File folder | |
| CDI 2015.sdf | 11/11/2015 10:08 ... | SDF File | 1,988 KB |
| Fox Village Dressage | 11/28/2014 11:27 ... | Shortcut | 2 KB |
| FVD.accde | 11/11/2015 10:18 ... | Microsoft Access ... | 24,704 KB |
| FVD.ico | 7/16/2003 1:55 PM | Icon | 3 KB |
| FVD2.accde | 11/11/2015 10:18 ... | Microsoft Access ... | 24,704 KB |
| FVD2.ico | 1/23/2002 11:49 AM | Icon | 3 KB |
| FVD3.accde | 11/11/2015 10:18 ... | Microsoft Access ... | 24,704 KB |
| hr.hdf_Can.hdf | 4/12/2015 1:02 PM | HDF File | 1,272 KB |
| license.dll | 11/11/2015 10:18 ... | Application extens... | 524 KB |
| Logo.gif | 5/19/2001 10:45 PM | GIF image | 2 KB |
| Setup.bat | 7/20/2011 8:13 AM | Windows Batch File | 1 KB |
| test.tdf | 4/12/2015 11:49 AM | TDF File | 836 KB |

Favorites: Desktop, Downloads, Recent places

This PC: Desktop, Documents, Downloads, Music, Pictures, Videos, Local Disk (C:), Data (E:)

Network: psf, tsclient



Remote Desktop Connection



Remote Desktop Connection

General

Display

Local Resources

Experience

Advanced

Logon settings



Enter the name of the remote computer.

Computer:

User name:

You will be asked for credentials when you connect.

Allow me to save credentials

Connection settings



Save the current connection settings to an RDP file or open a saved connection.

Save

Save As...

Open...



Hide Options

Connect

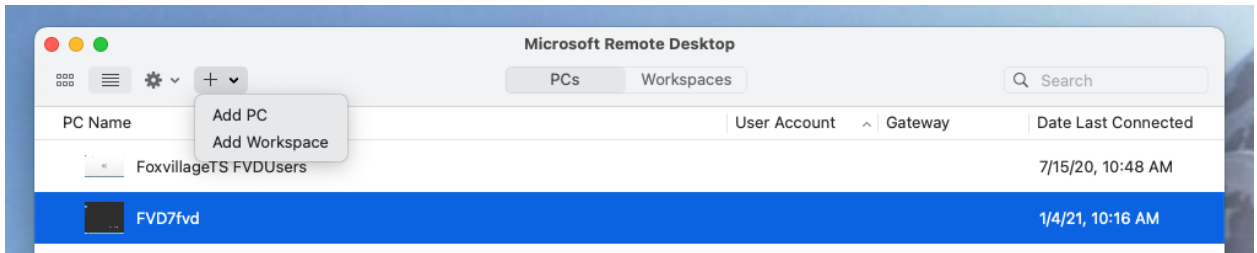
Help

Instructions for Apple – Mac or iOS

1. Download Microsoft Remote Desktop



2. Choose Add PC



3. The server is `fvdts.foxvillage.com:3489` or if that won't connect use: `192.168.0.56:3489`

Edit PC

PC name: `fvdts.foxvillage.com:3489`

User account: Ask when required

General | Display | Devices & Audio | Folders

Friendly name: FVD7fvd

Group: Saved PCs

Gateway: No gateway

Bypass for local addresses

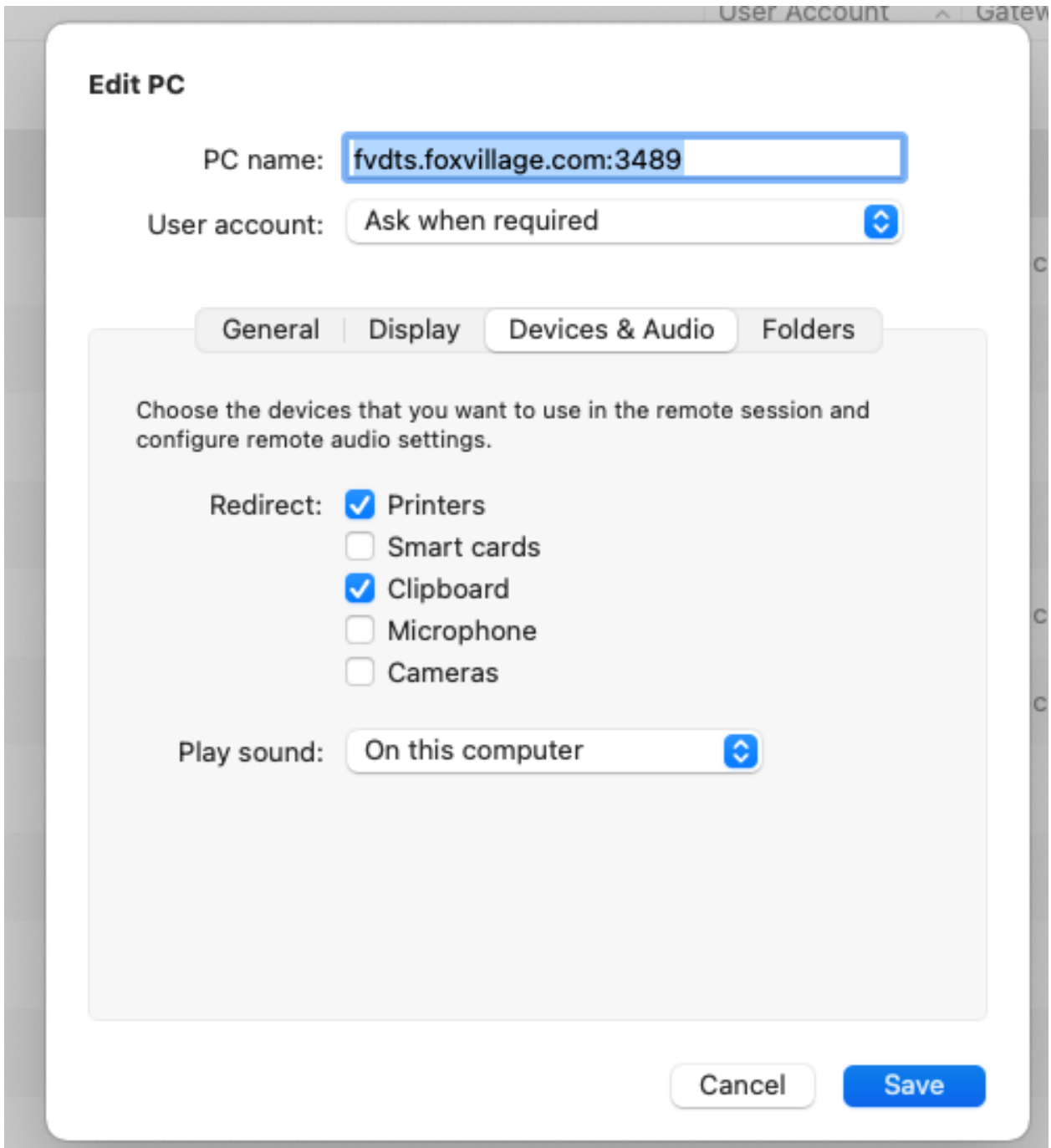
Reconnect if the connection is dropped

Connect to an admin session

Swap mouse buttons

Cancel Save

4. Under “Devices & Audio” check Printers and Clipboard so those redirect to your local system while logged in. Redirecting the printer will send print jobs to your *default* local printer . Directing the clipboard will allow you to copy and paste local files up to the server folder.



5.
6.